



Beaufort County Public Works Stormwater Infrastructure Project Summary

Project Summary: Milledge Village Road

Activity: Routine/Preventive Maintenance

Narrative Description of Project:

Completion: Sep-14

Project improved 4,140 L.F. of drainage system. Cleaned out (2) catch basins and 3,836 L.F. of roadside ditch. Jetted (3) crossline pipes, (31) driveway pipes and 304 L.F. of roadside pipe. Hydroseeded for erosion control.

2014-615 / Milledge Village Road	Labor Hours	Labor Cost	Equipment Cost	Material Cost	Contractor Cost	Indirect Labor	Total Cost
AUDIT / Audit Project	0.5	\$10.23	\$0.00	\$0.00	\$0.00	\$6.62	\$16.85
CBCO / Catch basin - clean out	32.0	\$714.82	\$354.56	\$106.92	\$0.00	\$478.56	\$1,654.86
DPJT / Driveway Pipe - Jetted	40.0	\$893.52	\$443.20	\$210.64	\$0.00	\$598.20	\$2,145.56
HAUL / Hauling	151.5	\$3,300.45	\$1,621.05	\$560.00	\$0.00	\$2,205.13	\$7,686.63
LP / Locate Pipe	16.0	\$356.56	\$14.48	\$5.84	\$0.00	\$226.32	\$603.20
ONJV / Onsite Job Visit	52.0	\$1,820.63	\$188.24	\$186.88	\$0.00	\$1,326.91	\$3,522.66
RB / Remove blockage from flowline	8.0	\$178.70	\$88.64	\$26.00	\$0.00	\$119.64	\$412.98
RSDCL / Roadside Ditch - Cleanout	305.0	\$6,742.95	\$1,524.72	\$621.28	\$0.00	\$4,502.60	\$13,391.55
RSPJ / Roadside Pipe - Jetted	7.0	\$158.00	\$88.64	\$31.00	\$0.00	\$106.20	\$383.84
UTLOC / Utility locates	0.5	\$10.23	\$0.00	\$0.00	\$0.00	\$6.62	\$16.85
2014-615 / Milledge Village Road Sub Total	612.5	\$14,186.08	\$4,323.53	\$1,748.56	\$0.00	\$9,576.79	\$29,834.96
Grand Total	612.5	\$14,186.08	\$4,323.53	\$1,748.56	\$0.00	\$9,576.79	\$29,834.96

Before



During



After



Project: Milledge Village Road Map 1

**Activity: Routine/
Preventive
Maintenance**















**Project #:
2014-615**

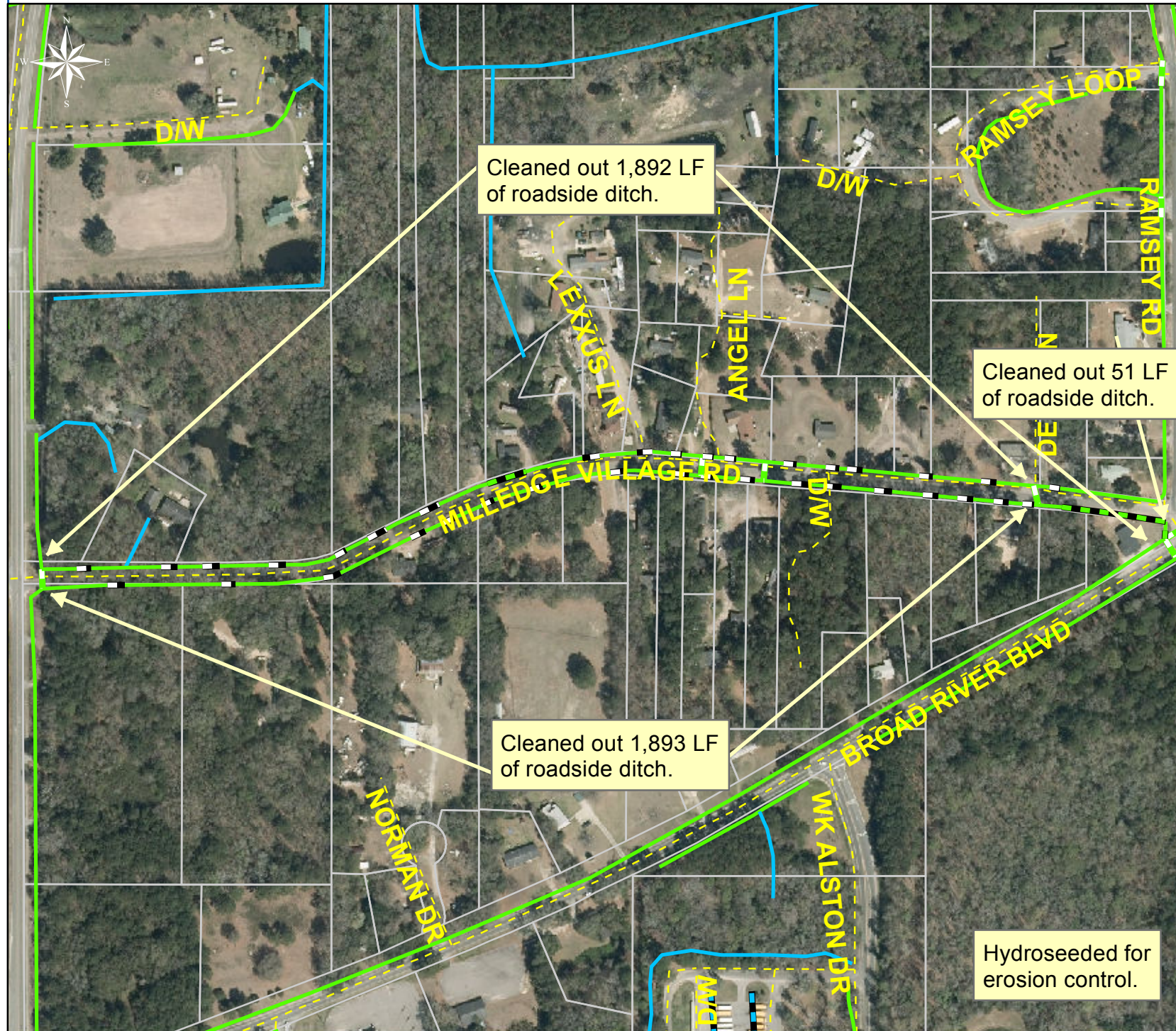
**Township: Port
Royal Island**

**Completed:
September 2014**

Legend

TYPE

-  River
-  Creek/Stream
-  River/Creek/Marsh BANK
-  Channel (fka Outfall)
-  Channel Pipe
-  Lateral
-  Lateral Pipe
-  Roadside
-  Roadside Pipe
-  Road Pipe
-  Crossline Pipe
-  Driveway Pipe
-  Access Pipe
-  Bleeder Pipe



1 inch = 306 feet

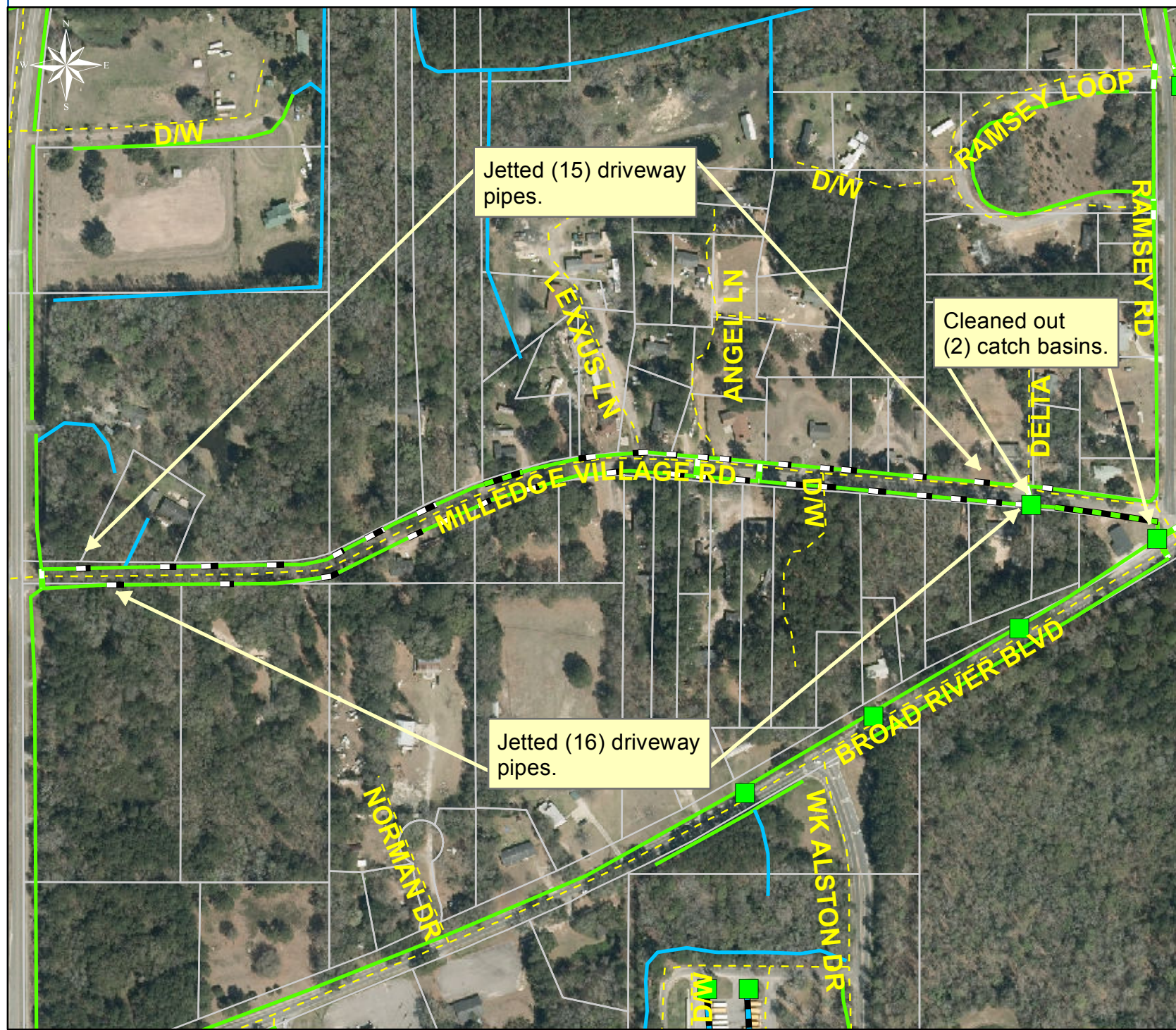
Project: Milledge Village Road Map 2

Activity: Vacuum Truck

Project #: 2014-615

Township: Port Royal Island

Completed: September 2014



Legend

TYPE	
	River
	Creek/Stream
	River/Creek/Marsh BANK
	Channel (fka Outfall)
	Channel Pipe
	Lateral
	Lateral Pipe
	Roadside
	Roadside Pipe
	Road Pipe
	Crossline Pipe
	Driveway Pipe
	Access Pipe
	Bleeder Pipe



1 inch = 306 feet

Project: Milledge Village Road Map 3

Activity: Vacuum Truck

Project #: 2014-615

Township: Port Royal Island

Completed: September 2014



Legend

TYPE

- River
- Creek/Stream
- River/Creek/Marsh BANK
- Channel (fka Outfall)
- Channel Pipe
- Lateral
- Lateral Pipe
- Roadside
- Roadside Pipe
- Road Pipe
- Crossline Pipe
- Driveway Pipe
- Access Pipe
- Bleeder Pipe



1 inch = 163 feet

Prepared By: BC Stormwater Management Utility

Date Print: 11/5/14

File: C:/sethdata/projects/projectmaps/Vac/Milledge Village Rd 2014-615 Map3